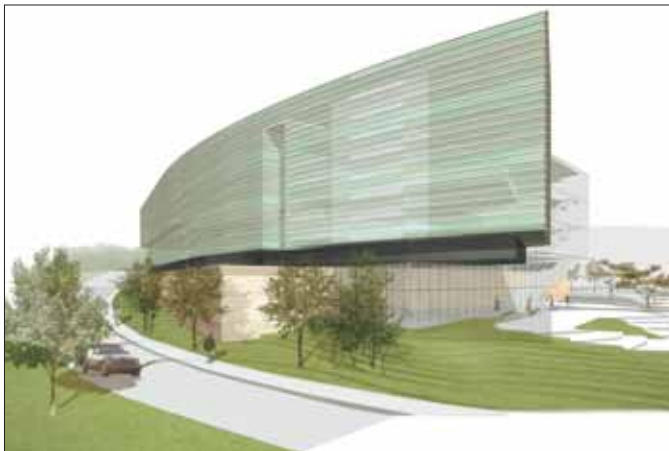
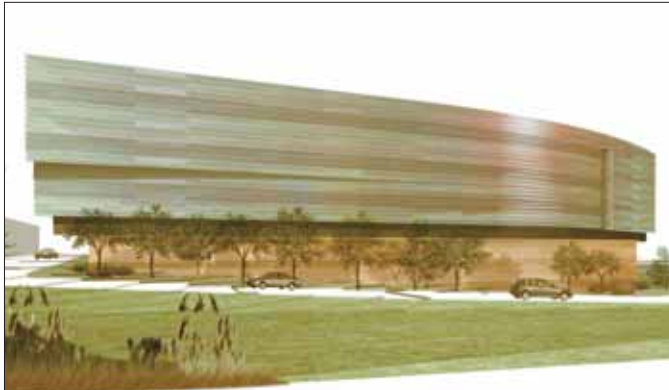


ARCHITECTURAL SHOWCASE

CANCER CENTER

OWP/P CHICAGO, IL

Froedtert Hospital Cancer Pavilion MILWAUKEE, WI



Project category: Project in progress (January 2008)
 Chief administrator: William Petasnick, President and CEO, Froedtert & Community Health System, (414) 259-3000
 Firm: OWP/P, (312) 960-8001
 Design team: Jim Mladucky, AIA, ACHA, CCS, Principal/Project Director; Randy Guillot, AIA, Design Principal; Dave Taeyaerts, AIA, PE, LEED, Project Manager; Elias Vavaroutsos, AIA, Project Designer; George Witaszek, AIA, Senior Architect/Technical Lead; Chris Liakakos, AIA, ACHA, Planning Principal
 Total building area (sq. ft.): 497,000
 Construction cost/sq. ft.: \$165
 Total construction cost (excluding land): \$82,000,000

Increasing demand for cancer care services and inefficiencies caused by disparate locations of cancer-related services led Froedtert Hospital and the Medical College of Wisconsin to decide to expand and consolidate all cancer programs into one location on the academic medical center's campus.

The architectural concept for the Froedtert Hospital Cancer Pavilion originated from the hospital's desire to create a simple yet meaningful and reassuring presence to patients, visitors, and staff. The design establishes a place that creates a sense of grace in life; a place where orientation, intuition, and mood are influenced by the practical operational considerations of circulation, efficiency, and flow of space; and a place embracing and respectful of nature. The design creates a flexible, optimistic healing environment that responds to both the physical and emotional aspects of

patient comfort and well-being. The new facility will house services often found within a comprehensive cancer care facility, including the clinics developed around a "hub" model. This increases interaction among patients, caregivers, and researchers for improved care, efficiency, and satisfaction. Other elements will include a Quality of Life Center, an Image Recovery Center, a Breast Center, a Day Hospital, a centralized Procedure Suite, Radiation/Oncology, Phlebotomy, an Education Center, and dedicated parking for cancer patients.

The design favors neither doctor, patient, nor researcher but creates a balanced environment that meets the needs of patients, visitors, and staff. There is a connection to humanity within the building and an opportunity to interact with nature, views, and natural light, giving a sense of place and hope.

